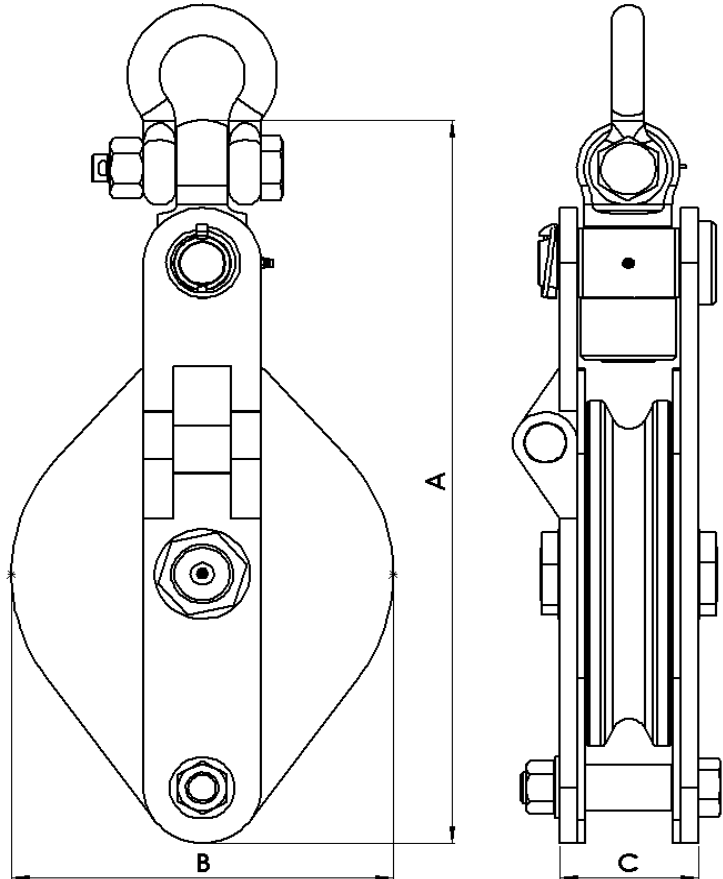


**Manufactured in accordance with:**

**B.S. 4018: 1966**

**A.S. B298-1871**



**Special Features:**

- Tested and Certified with easy to read W.L.L plate
- Quick action single snatch facilitates ease of rope reeving with positive location and locking
- Swivelling crosshead
- Fitted with high load green pin shackle
- Fully machined sheave with greaseable bronze bearing hub
- Wide shoulder sheave profile ensures maximum rope guiding and added sheave protection
- Stepped axle is fully locked for block rigidity
- Becket for third fall of rope
- D.L.L Australia (Vict.) approved
- Available in 1, 2 or 3 sheave configurations
- Powdercoated side plates with zinc plated hardware for maximum corrosion resistance

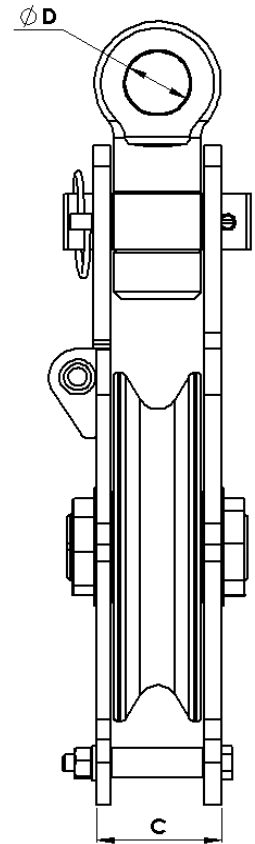
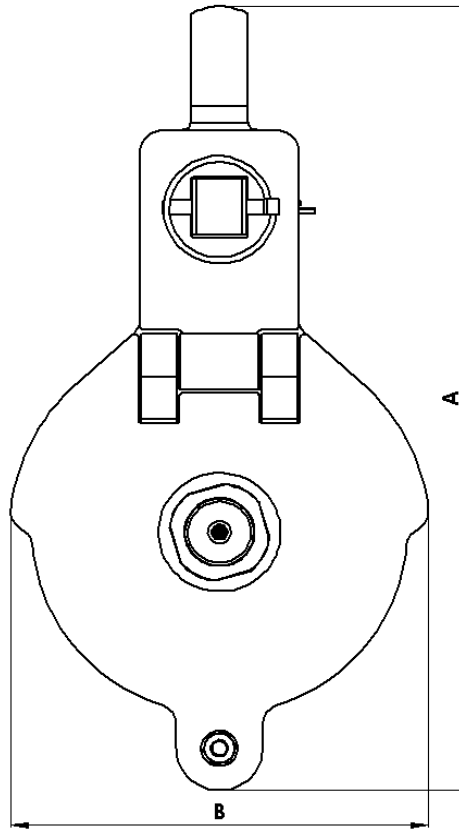
BLOCK SIZE	W.L.L FIXED tonne	W.L.L MOVING tonne	PROOF LOAD tonne	SHEAVE Ø mm	WIRE ROPE Ø mm	A mm	B mm	C mm	WEIGHT kg
150mm	1	2	4	150	12	337	160	59	7
200mm	2	4	8	200	16	429	212	79	17
250mm	3	6	12	250	20	524	260	94	39

PRODUCT CODES	
150mm	7-145-150
200mm	7-145-200
250mm	7-145-250

**Manufactured in accordance with:**

**B.S. 4018: 1966**

**A.S. B298-1871**



**Special Features:**

- Tested and Certified with easy to read W.L.L plate
- Quick action single snatch facilitates ease of rope reeving with positive location and locking
- Swivelling crosshead
- Fitted with high load green pin shackle (optional)
- Fully machined sheave with greaseable bronze bearing hub
- Wide shoulder sheave profile ensures maximum rope guiding and added sheave protection
- Stepped axle is fully locked for block rigidity
- Becket for third fall of rope
- D.L.L Australia (Vict.) approved
- Available in 1 or 2 sheave configurations
- Powdercoated side plates with zinc plated hardware for maximum corrosion resistance

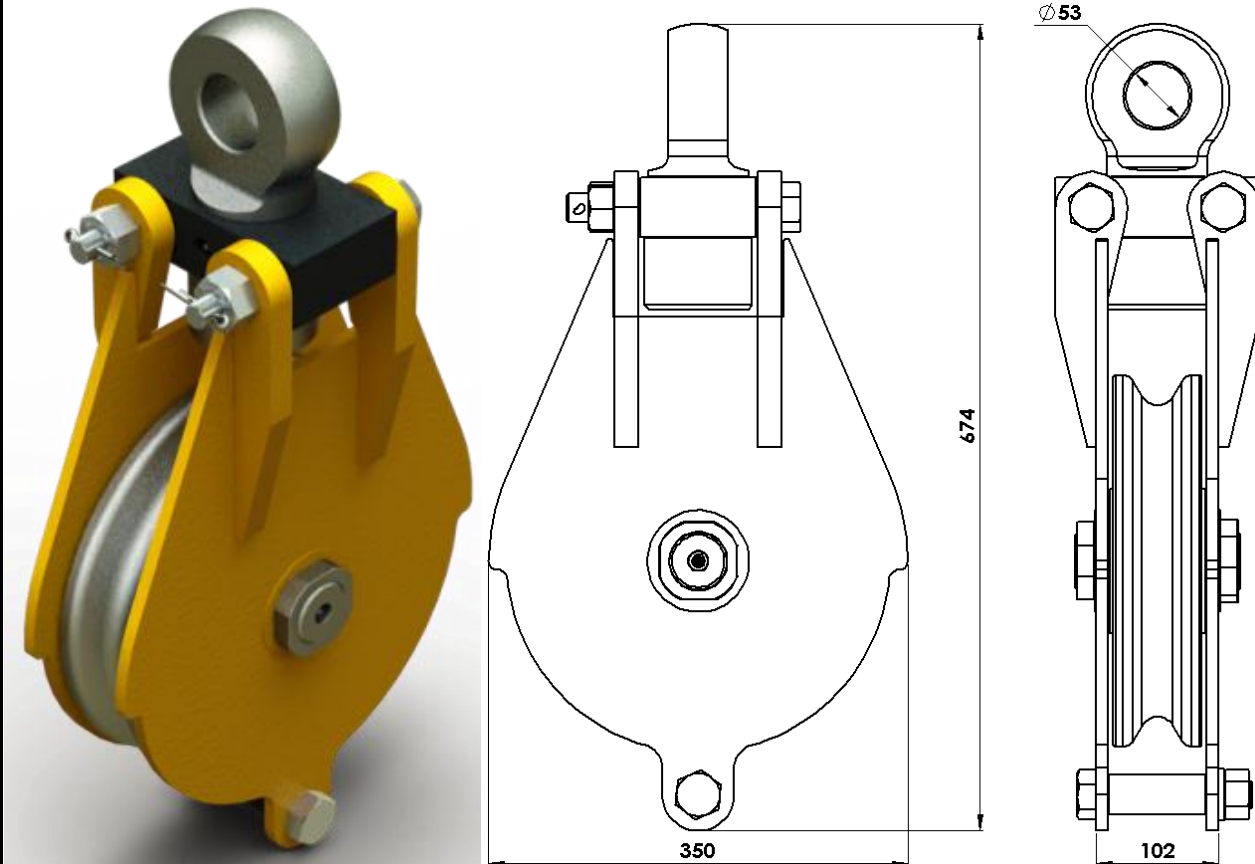
BLOCK SIZE	W.L.L FIXED tonne	W.L.L MOVING tonne	PROOF LOAD tonne	SHEAVE Ø mm	WIRE ROPE Ø mm	A mm	B mm	C mm	D Ø mm	WEIGHT kg
150mm	5	10	20	150	20	462	195	87	45	20
200mm	6	12	24	200	22	513	248	87	45	26
250mm	7.5	15	30	250	26	562	290	87	45	33

PRODUCT CODES	
150mm	7-155-150
200mm	7-155-200
250mm	7-155-250

**Manufactured in accordance with:**

**B.S. 4018: 1966**

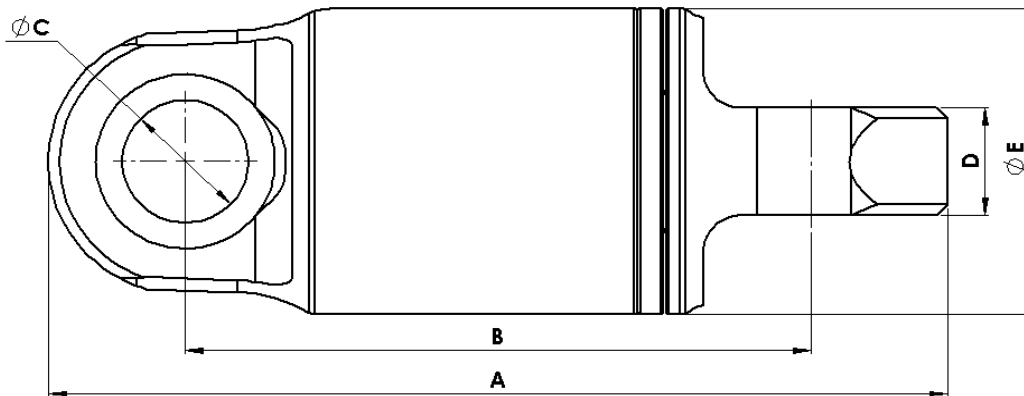
**A.S. B298-1871**



**Special Features:**

- Tested and Certified with easy to read W.L.L plate
- Quick action double snatch facilitates ease of rope reeving with positive location and locking
- Swivelling crosshead
- Fitted with high load green pin shackle (optional)
- Fully machined sheave with greaseable bronze bearing hub
- Wide shoulder sheave profile ensures maximum rope guiding and added sheave protection
- Stepped axle is fully locked for block rigidity
- Becket for third fall of rope
- D.L.L Australia (Vict.) approved
- Available in 1 or 2 sheave configurations
- Powdercoated side plates with zinc plated hardware for maximum corrosion resistance

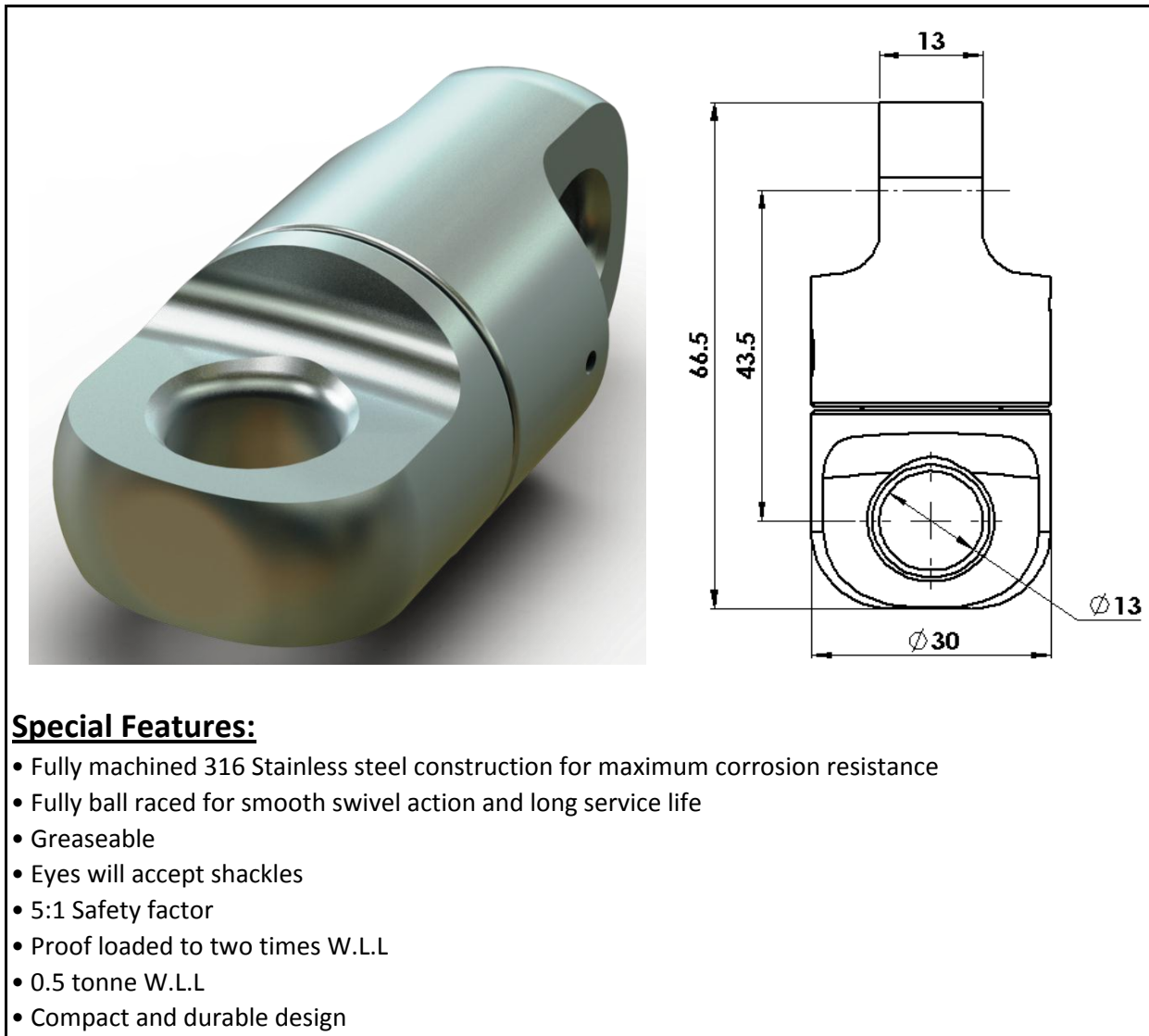
BLOCK SIZE	W.L.L FIXED tonne	W.L.L MOVING tonne	PROOF LOAD tonne	SHEAVE Ø mm	WIRE ROPE Ø mm	WEIGHT kg	PRODUCT CODE
300mm	10	20	40	300	28	65	7-155-300



**Special Features:**

- Compact and rugged design
- 5:1 Safety factor
- Fully serviceable
- Greaseable
- Fully sealed
- SKF thrust bearing
- Eyes will accept Shackles and Hammerlocks
- Proof loaded to two times W.L.L
- Zinc plated for corrosion resistance
- Also available in Clevis - Eye or Clevis - Clevis configurations (Eye - Eye shown)

SWIVEL W.L.L tonne	PROOF LOAD tonne	A mm	B mm	Ø C mm	D mm	Ø E mm	WEIGHT kg	PRODUCT CODE
1.5	3	123	82	16.5	16	40	0.5	7-265-015
3	6	167	137	28.5	20	64.5	2	7-265-030
6	12	243	169	34	30	85	5	7-265-060
10	20	303	213	40	38	106	11	7-265-100
15	30	303	213	40	38	106	16	7-265-150

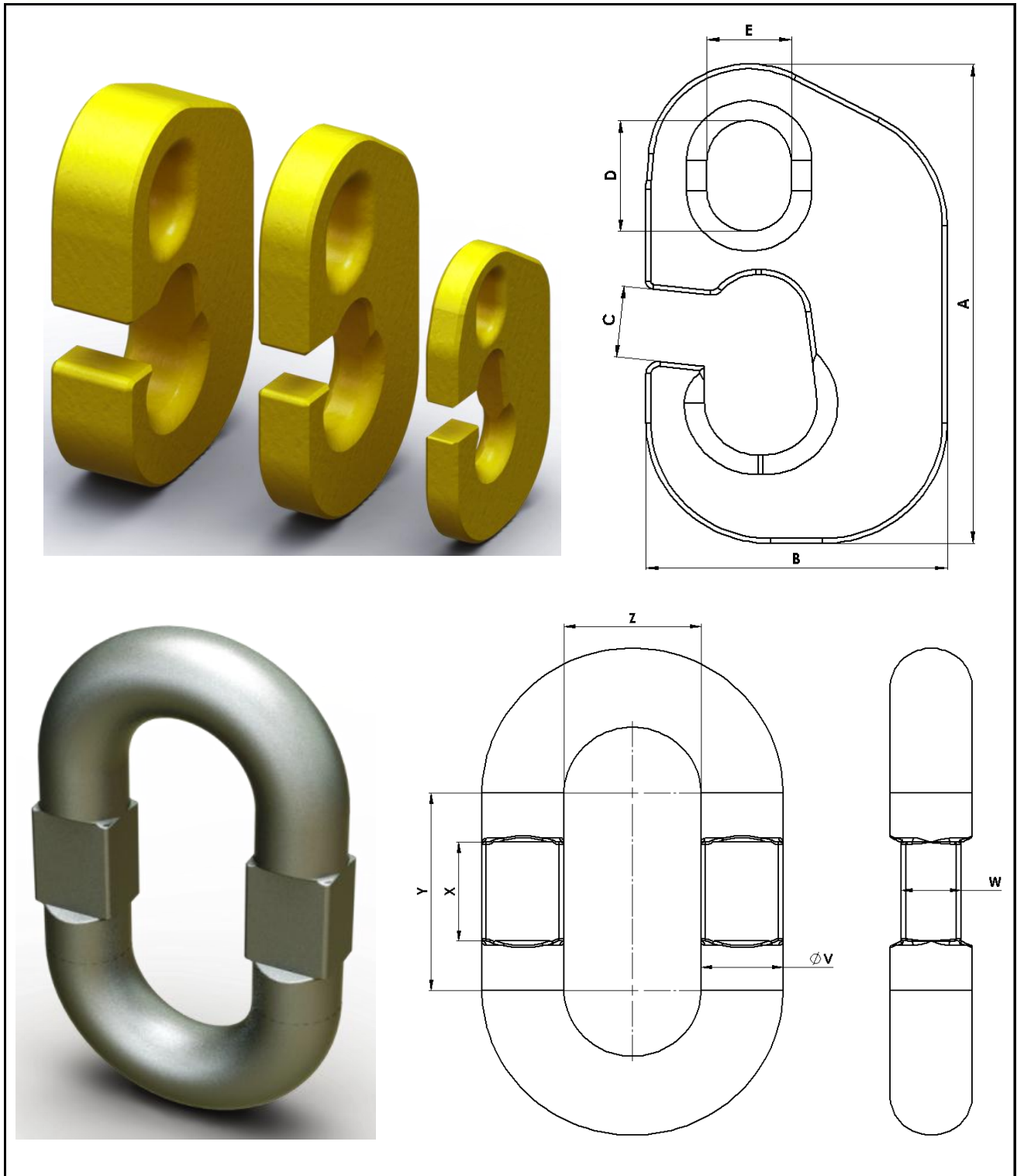


**Special Features:**

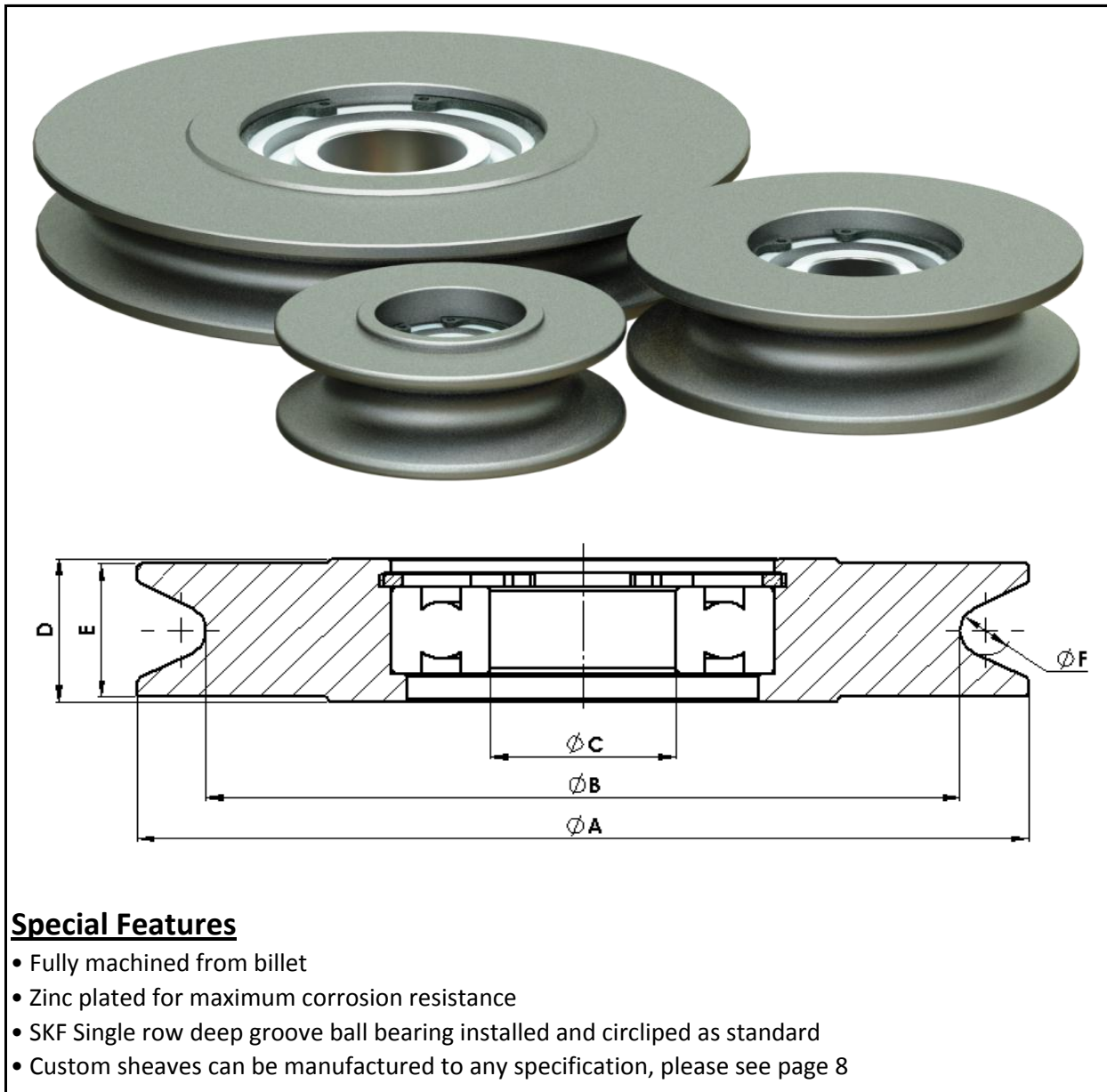
- Fully machined 316 Stainless steel construction for maximum corrosion resistance
- Fully ball raced for smooth swivel action and long service life
- Greaseable
- Eyes will accept shackles
- 5:1 Safety factor
- Proof loaded to two times W.L.L
- 0.5 tonne W.L.L
- Compact and durable design

PRODUCT CODE
7-250-010

# G Hooks & Recessed Links

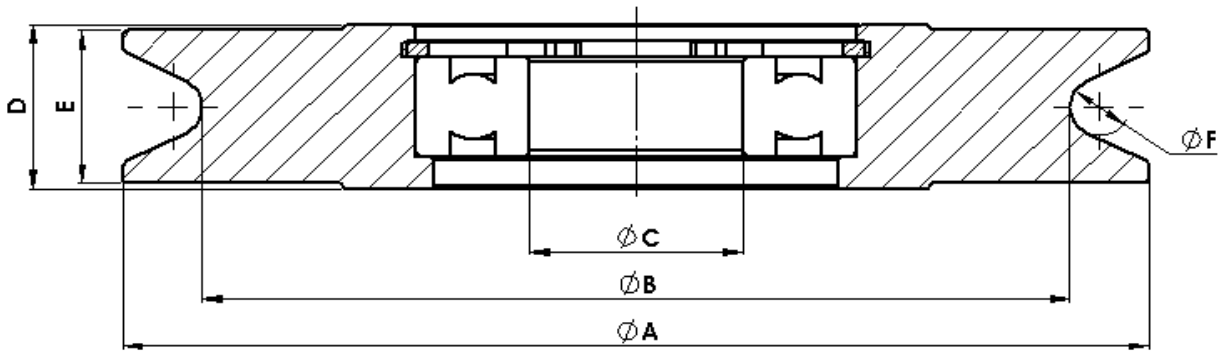


G' HOOK						← TO FIT →		RECESSED LINK					
PLATE mm	A mm	B mm	C mm	D mm	E mm	PRODUCT CODE	SIZE	Ø V mm	W mm	X mm	Y mm	Z mm	PRODUCT CODE
16mm	151	90	18	31	21	7-515-016	22mm	22	15	20	100	50	7-520-022
25mm	195	107	23	45	33	7-515-026	32mm	32	19	30	125	50	7-520-032
40mm	195	118	29	45	33	7-515-040	36mm	36	26	45	90	60	7-525-036
45mm	230	130	33	60	46	7-515-045	38mm	39	30	50	100	62	7-525-038



STOCK SIZE	OUTSIDE Ø A mm	B.O.G Ø B mm	SHAFT Ø C mm	HUB WIDTH D mm	RIM WIDTH E mm	ROPE Ø F mm	PRODUCT CODE
50	50	34	10	17	16	5	7-131-050
75	75	52	12	27	24	10	7-131-075
100	100	73	20	29.5	28	10	7-131-100
150	150	124	20	30.5	429	12	7-131-150
*168	168	142	35	28	26	9	7-131-168
355	355	310	60	60	56	19	7-131-355

\* STOCK SIZE 168, Standard crane truck sheave.  
 \*\* STOCK SIZE 200, Crane truck sheaves available on request.



	SPECIFY DIMENSION
OUTSIDE Ø A mm	
B.O.G Ø B mm	
SHAFT Ø C mm	
HUB WIDTH mm	
RIM WIDTH mm	
ROPE Ø mm	
BEARING TYPE	
FINISH	



**ROBERTS ENGINEERING LTD**

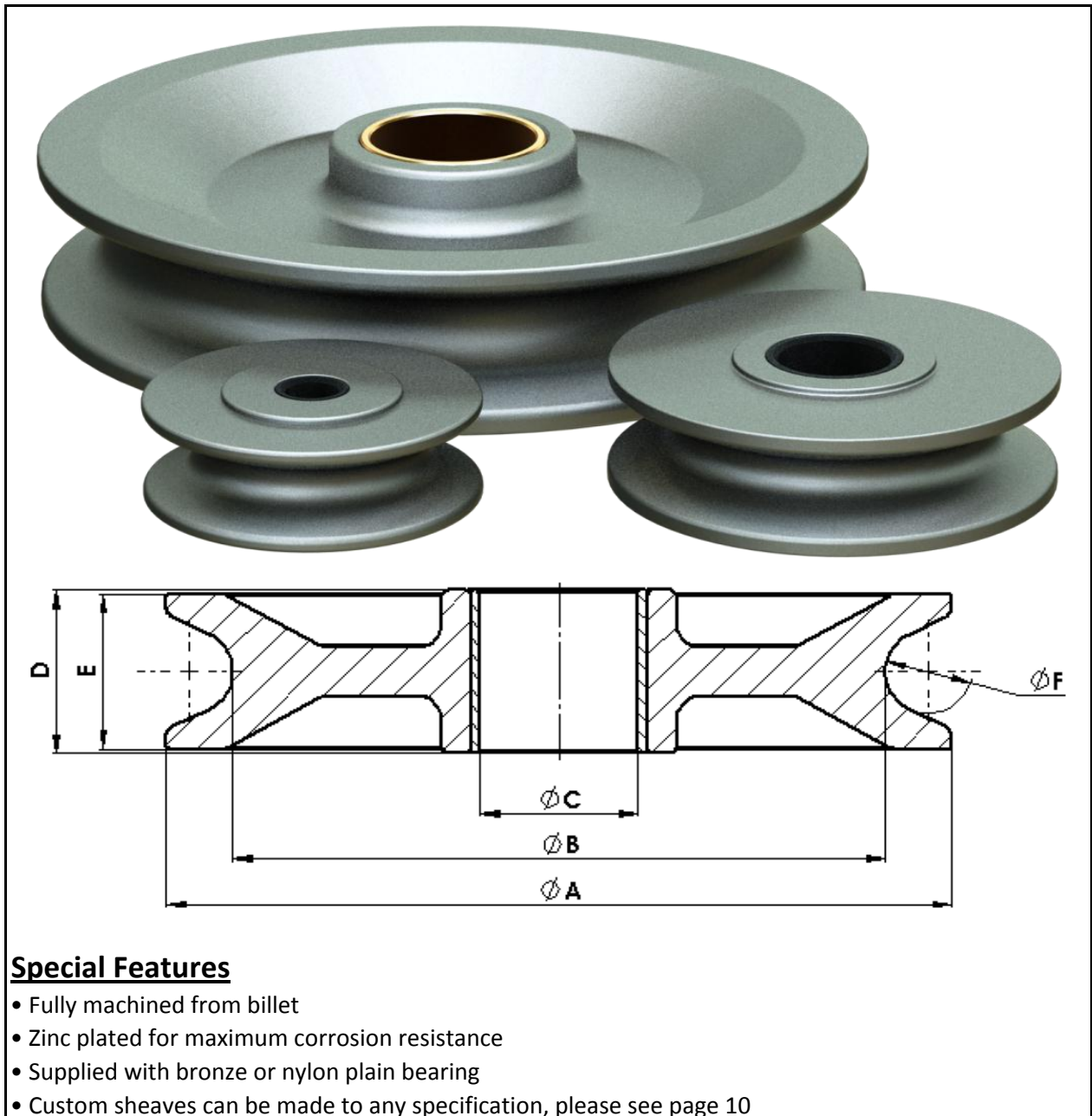
**Precision Engineers/CNC Machining**

Unit 3D 200 Maces Road, PO Box 19966, Christchurch, New Zealand

T +64 3 384 4360 M +64 29 384 4360 F +64 3 384 4371

E sales@robertseng.co.nz W www.robertseng.co.nz

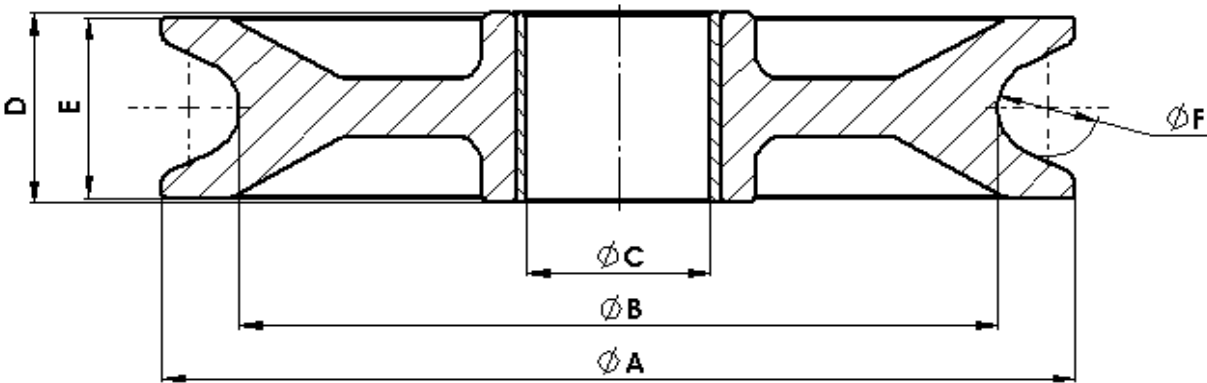





**Special Features**

- Fully machined from billet
- Zinc plated for maximum corrosion resistance
- Supplied with bronze or nylon plain bearing
- Custom sheaves can be made to any specification, please see page 10

STOCK SIZE	OUTSIDE Ø A mm	B.O.G Ø B mm	SHAFT Ø C mm	HUB WIDTH D mm	RIM WIDTH E mm	ROPE Ø F mm	PRODUCT CODE
75	75	52	12	27	24	10	7-130-075
100	100	73	20	31	28	10	7-130-100
150	150	124	35	31	29	12	7-130-150
200	200	166	35	43	41	19	7-130-200
250	250	210	45	59	57	20	7-130-250
300	310	260	63.5	80	74	28	7-130-300
355	355	310	60	60	56	19	7-131-355



	SPECIFY DIMENSION
OUTSIDE $\phi$ A mm	
B.O.G $\phi$ B mm	
SHAFT $\phi$ C mm	
HUB WIDTH mm	
RIM WIDTH mm	
ROPE $\phi$ mm	
FINISH	



**ROBERTS ENGINEERING LTD**

**Precision Engineers/CNC Machining**

Unit 3D 200 Maces Road, PO Box 19966, Christchurch, New Zealand

T +64 3 384 4360 M +64 29 384 4360 F +64 3 384 4371

E sales@robertseng.co.nz W www.robertseng.co.nz